



SIGNATURE

a series of collections by the furniture guild

Signature Series Retail Pricing 2012

www.signaturevanity.com

The Furniture Guild, Inc
ph (888) 479-4108 - fax (770) 479-0176

Features and Benefits

Made in USA - same factory as Vanity Flair
Each piece is built one at a time, and signed by the craftsman
8 Designs, each available in 9 sizes, 24" - 72"
14 Finishes available
Cases made with 3/4" Formaldehyde Free Furniture Grade Plywood
Inset Doors and Drawers
Drawers and Interiors are finished to match exterior
True mortise and tennon door/drawer front construction
Full Extension, Soft Close Drawer Runners
Drawer runners are mounted to 3/4" interior walls
120 degree, Soft Closing Doors
3/4" Mortise and Tennon Doors with 5/8" solid wood panel
Parker and Taylor have 3 base options
Custom Sizing Available

Available Finishes

Stains

S1 Normandy
S2 Briar
S3 Brandy
S4 Black Forest
S5 Coffee Bean
S6 Piedmont

Paints

S11 Blanc
S12 Nonchalant
S13 China Red
S14 Robin Egg
S15 Super White
S16 Harbor Gray
S17 Silverstream
S18 Sable

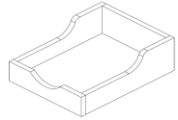
Limited Lifetime Warranty

The Furniture Guild warrants its products to be free from defects in materials and workmanship under normal home use and service for as long as the original customer owns the product. Our obligation under this warranty shall be limited to the repair or exchange of any part or parts which may prove defective under normal home use and service during this period. Replacement of drawer slides and/or hardware are subject to the availability from our suppliers. This limited warranty does not cover defects caused by improper storage, installation, misuse or neglect. Nor does it cover any expense involved in removing, shipping and reinstalling any items or products. This warranty applies only to the original consumer purchaser of these products and at the original site of installation only. Furniture Guild reserves the option of approving field repair or returning the cabinet or component to the factory for correction.

We exclude and are not responsible for any consequential damages nor for any incidental damages arising out of the breach of any expressed, written, or implied warranty which relates to our products. Some states do not allow the exclusion or limitation of incidental or consequential damages so the above limitation or exclusion may not apply to you.

We will not assume, nor authorize any person to assume for us any liability in connection with the sale of Furniture Guild's products. This warranty is in lieu of all other warranties expressed or implied. To file a warranty claim, the purchaser should contact the local authorized Furniture Guild dealer who will assist in servicing the claim.

Accessories



Pullout Tray

A full extension tray behind doors which allows easy access to items inside the cabinet.

ITEM #	W	D	H		
PTRAY	custom	16 3/4	6		\$ 350.00



Adjustable Shelf

Available most anywhere. We use metal grommets to give shelf holes a finished look

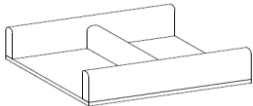
ITEM #	W	D	H		
ADSF	Custom	Custom	Custom		\$ 150.00



Side Shelves

Interior side shelves for sink cabinet interiors. Provides 4-6" storage on either side of plumbing

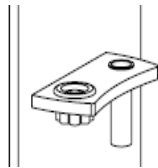
ITEM #	W	D	H		
SSHELF	Custom	Custom	Custom		\$ 195.00



Drawer Divider

"H" style drawer divider slide front to back to provide adjustable divided storage inside a drawer

ITEM #	W	D	H		
DDL12	<12	8	2		\$ 100.00

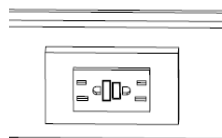


Hairdryer / Curling Iron Kit

*Power Option Recommended when ordering this item

Decorative wooden bracket with heat resistant inserts mounted to the back of a door. (spec left or right)

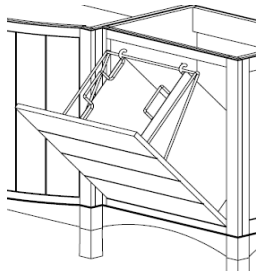
ITEM #	W	D	H		
HDCI	Custom	Custom	Custom		\$ 195.00



Power Option

A powered receptacle inside the cabinet which allows you to leave your appliance plugged in and hidden.

ITEM #					
PWR110					\$ 195.00



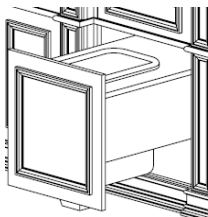
Laundry Hamper

A forward tilting door on a bank or wing that houses our convenient system for holding laundry.

Disguised as a door or stack of drawers. (Requires Wing or Bank Cabinet)

Fits on all linen towers.

ITEM #	W	D	H		
LH10	10	12	20		\$ 250.00
LH16	15	12	26		\$ 250.00
LH22	21	12	26		\$ 250.00
LH28	27	12	26		\$ 250.00



Trash Pullout

Usually disguised as a door or stack of drawers, We integrate 1 or 2 standard 11 x 14 trash cans into a full extension, soft closing pullout. (Requires Wing or Bank Cabinet)

Fits on all linen towers.

ITEM #	W	D	H		
TR1	15	Includes 1 can			\$ 250.00



Under Sink Light

Surface Mounted LED light bar is activated automatically when the door opens.

Requires a power receptacle

ITEM #	W	D	H		
INTLT23DR	0.5	1/2	23"		\$ 375.00



Drawer Light

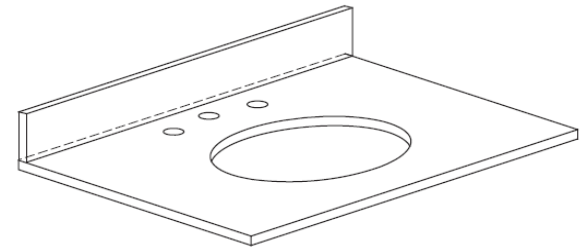
Battery operated surface mounted LED light. Attaches to any drawer and provides light when drawer is opened. Motion activated. 3 AAA batteries included. Requires installation.

ITEM #	W	D	H		
DWRLT1	7	1	1		\$ 80.00

Stone Countertops

Features:

Colors Available: Black Granite, White Carrara Marble, Beige, or Emperador Marble
 Available in five sizes - 25" , 31" , 37" , 49" , and 61" (61" is double sink only)
 Top pre-cut for wide spread faucet and 18" vitreous china undermount sink
 Square eased edge on 3 sides
 All tops are 1" thick except Black Granite (3/4")
 Backsplash Included



Color Codes:

BL Black Granite
 BG Beige
 WT White Carrara Marble
 EM Emperador Marble

When ordering add color code to item # for top.

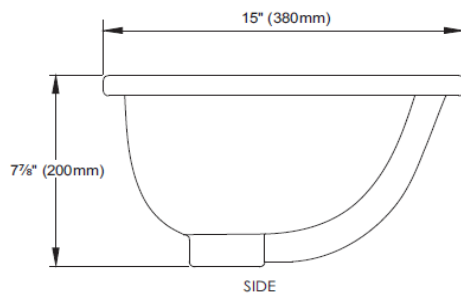
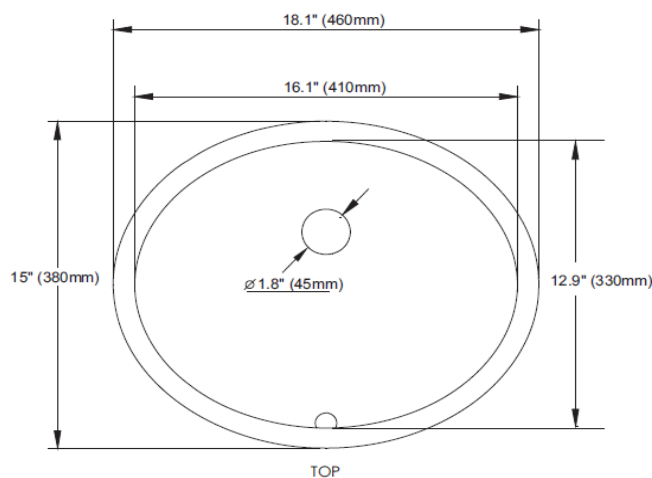
ex. TOP3722BL = 37" top in Black Granite

To Fit Oval Sink

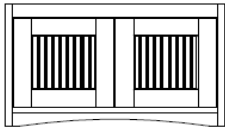
Item #	Size	COLOR CODE-			
		WT Carrera 1" Thick	BL Black 3/4" Thick	BG Beige 1" Thick	EM Emperador 1" Thick
TOP2522	25" x 22"	\$560	\$560	\$560	\$560
TOP3122	31" x 22"	\$630	\$630	\$630	\$630
TOP3722	37" x 22"	\$750	\$750	\$750	\$750
TOP4922	49" x 22"	\$980	\$980	\$980	\$980
TOP6122 (Double Sink)	61" x 22"	\$1,560	\$1,560	\$1,560	\$1,560
TOPSS	sidesplash	\$50	\$50	\$50	\$50

Recommended Sinks

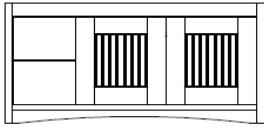
SINKOV1518W	White Undermount Oval	\$85
SINKOV1518L	Linen Undermount Oval	\$85



110 Wall Hung Julia Vanity Configurations

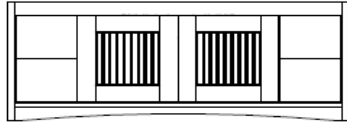


ITEM #	W	D	H	A	Stone Top/Sink
110-0224	24	21.5	18	1545	645
110-0230	30	21.5	18	1645	715
110-0236	36	21.5	18	1745	835

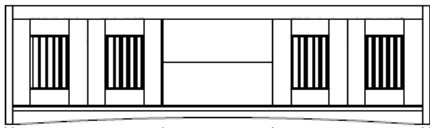


ITEM #	W	D	H	A	Stone Top/Sink
110-0336	36	21.5	18	2895	835
110-0436	36	21.5	18	2895	835

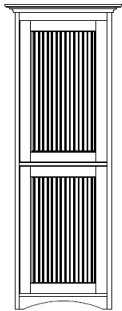
110-0336 has drawers on the left
110-0436 has drawer on the right



ITEM #	W	D	H	A	Stone Top/Sink
110-0542	42	21.5	18	3295	N/A
110-0548	48	21.5	18	3395	1065
110-0560	60	21.5	18	3595	N/A



ITEM #	W	D	H	A	Stone Top/Sink
110-0760	60	21.5	18	3645	1730
110-0766	66	21.5	18	3745	N/A
110-0772	72	21.5	18	3845	N/A

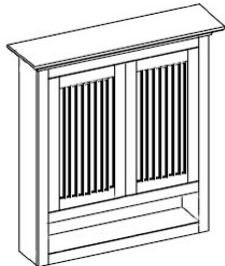


Julia Wall Hung Linen Tower

*Measurements are without crown molding
Includes 3 adjustable shelves in upper section
Includes 2 adjustable shelves in lower section

Hinge Left or Hinge Right
Hamper Option - \$250.00

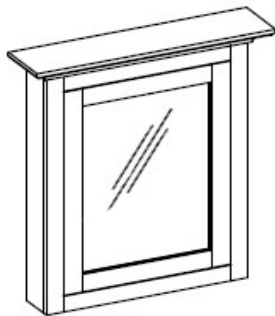
ITEM #	W	D	H	A
110-0924L	*22	*15	72	2945
110-0924R	*22	*15	72	2945



Julia OTJ Cabinet

*Measurements are without crown molding
Includes 2 adjustable wood shelves

ITEM #	W	D	H	A
210-2724	*24	*8.5	32	1295
210-2730	*30	*8.5	32	1395



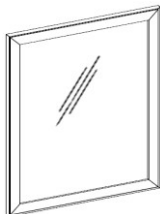
Signature Medicine Cabinets

*Measurements are without crown molding
Mirrored Back panel in cabinet
Mirrored Door Front

Includes 3 adjustable glass shelves
Hinge Left or Hinge Right

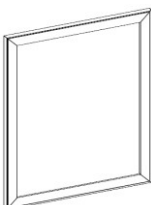
Surface Mount	W	D	H	A
200-2516 L/R	*16	*4.75	32	1195
200-2520 L/R	*20	*4.75	32	1295
200-2524 L/R	*24	*4.75	32	1395

Recessed	W	D	H	A
200-2616 L/R	*16	*4.75	32	1195
200-2620 L/R	*20	*4.75	32	1295
200-2624 L/R	*24	*4.75	32	1395



Face Frame Mirror

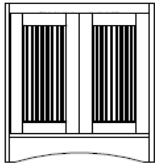
ITEM #	W	D	H	A
200-2016	18.5	.75	33.25	525
200-2020	22.5	.75	33.25	535
200-2024	26.5	.75	33.25	545



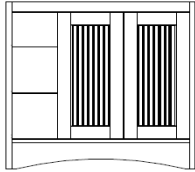
Face Frame Medicine Cabinet Surround

ITEM #	W	D	H	Roborn Size	A
200-2116	18.5	.75	33.25	16 x 30	475
200-2120	22.5	.75	33.25	20 x 30	489
200-2124	26.5	.75	33.25	24 x 30	495

210 Julia Vanity Configurations

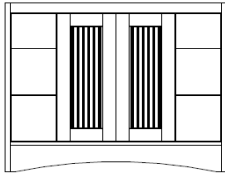


ITEM #	W	D	H	A	Stone Top/Sink
210-0224	24	21.5	34	1595	645
210-0230	30	21.5	34	1695	715
210-0236	36	21.5	34	1795	835

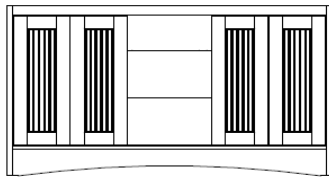


ITEM #	W	D	H	A	Stone Top/Sink
210-0336	36	21.5	34	2945	835
210-0436	36	21.5	34	2945	835

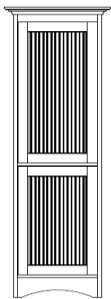
210-0336 has drawers on the left
210-0436 has drawer on the right



ITEM #	W	D	H	A	Stone Top/Sink
210-0542	42	21.5	34	3395	N/A
210-0548	48	21.5	34	3495	1065
210-0560	60	21.5	34	3695	N/A



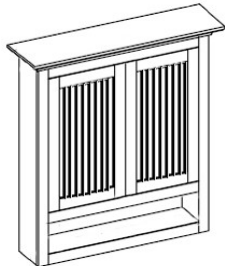
ITEM #	W	D	H	A	Stone Top/Sink
210-0760	60	21.5	34	3695	1730
210-0766	66	21.5	34	3795	N/A
210-0772	72	21.5	34	3895	N/A



Julia Linen Tower

*Measurements are without crown molding
Includes 3 adjustable shelves in upper section
Includes 2 adjustable shelves in lower section
Hinge Left or Hinge Right
Hamper Option - \$250.00

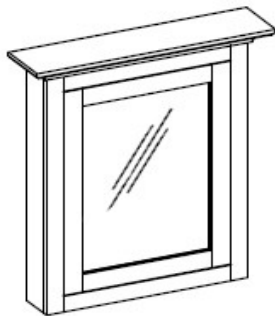
ITEM #	W	D	H	A
210-0924L	*22	*15	78	2995
210-0924R	*22	*15	78	2995



Julia OTJ Cabinet

*Measurements are without crown molding
Includes 2 adjustable wood shelves

ITEM #	W	D	H	A
210-2724	*24	*8.5	32	1295
210-2730	*30	*8.5	32	1395

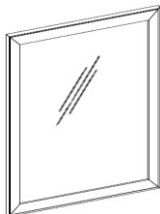


Signature Medicine Cabinets

*Measurements are without crown molding
Mirrored Back panel in cabinet
Mirrored Door Front
Includes 3 adjustable glass shelves
Hinge Left or Hinge Right

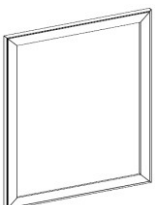
Surface Mount	W	D	H	A
200-2516 L/R	*16	*4.75	32	1195
200-2520 L/R	*20	*4.75	32	1295
200-2524 L/R	*24	*4.75	32	1395

Recessed	W	D	H	A
200-2616 L/R	*16	*4.75	32	1195
200-2620 L/R	*20	*4.75	32	1295
200-2624 L/R	*24	*4.75	32	1395



Face Frame Mirror

ITEM #	W	D	H	A
200-2016	18.5	.75	33.25	525
200-2020	22.5	.75	33.25	535
200-2024	26.5	.75	33.25	545

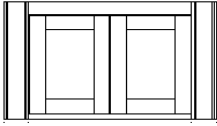


Face Frame Medicine Cabinet Surround

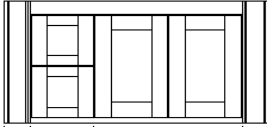
ITEM #	W	D	H	Roborn Size	A
200-2116	18.5	.75	33.25	16 x 30	475
200-2120	22.5	.75	33.25	20 x 30	489
200-2124	26.5	.75	33.25	24 x 30	495

120 Wall Hung Parker Vanity Configurations

24" version is a single door hinges right

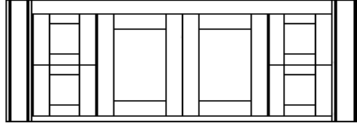


ITEM #	W	D	H	A	Stone Top/Sink
120-0124	24	21.5	18	1945	645
120-0230	30	21.5	18	2145	715
120-0236	36	21.5	18	2245	835

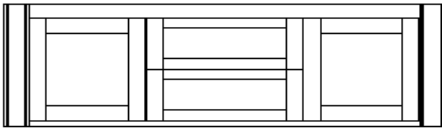


ITEM #	W	D	H	A	Stone Top/Sink
120-0336	36	21.5	18	3345	835
120-0436	36	21.5	18	3345	835

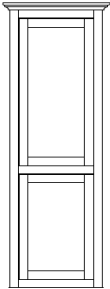
120-0336 has 2 drawers on left
120-0436 has 2 drawers on right



ITEM #	W	D	H	A	Stone Top/Sink
120-0542	42	21.5	18	3295	N/A
120-0548	48	21.5	18	3395	1065
120-0560	60	21.5	18	3495	N/A



ITEM #	W	D	H	A	Stone Top/Sink
120-0760	60	21.5	18	3945	1730
120-0766	66	21.5	18	4045	N/A
120-0772	72	21.5	18	4145	N/A

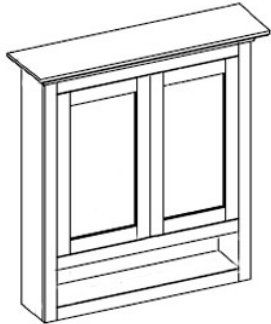


Parker Wall Hung Linen Tower

*Measurements are without crown molding
Includes 3 adjustable shelves in upper section
Includes 2 adjustable shelves in lower section

Hinge Left or Hinge Right
Hamper Option - \$250.00

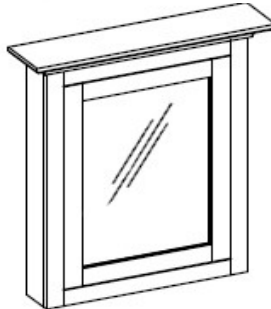
ITEM #	W	D	H	A
120-0924L	*23.25	*15	72	2945
120-0924R	*23.25	*15	72	2945



Parker OTJ Cabinet

*Measurements are without crown molding
Includes 2 adjustable wood shelves

ITEM #	W	D	H	A
220-2724	*24	*8.5	32	1295
220-2730	*30	*8.5	32	1395



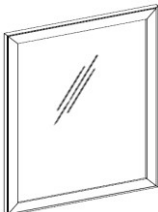
Signature Medicine Cabinets

*Measurements are without crown molding
Mirrored Back panel in cabinet
Mirrored Door Front

Includes 3 adjustable glass shelves
Hinge Left or Hinge Right

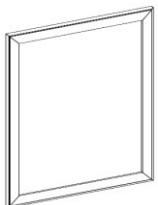
Surface Mount	W	D	H	A
200-2516 L/R	*16	*4.75	32	1195
200-2520 L/R	*20	*4.75	32	1295
200-2524 L/R	*24	*4.75	32	1395

Recessed	W	D	H	A
200-2616 L/R	*16	*4.75	32	1195
200-2620 L/R	*20	*4.75	32	1295
200-2624 L/R	*24	*4.75	32	1395



Face Frame Mirror

ITEM #	W	D	H	A
200-2016	18.5	.75	33.25	525
200-2020	22.5	.75	33.25	535
200-2024	26.5	.75	33.25	545

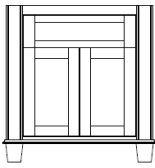


Face Frame Medicine Cabinet Surround

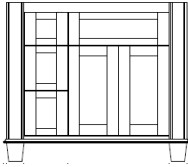
ITEM #	W	D	H	Roborn Size	A
200-2116	18.5	.75	33.25	16 x 30	475
200-2120	22.5	.75	33.25	20 x 30	489
200-2124	26.5	.75	33.25	24 x 30	495

220 Parker Vanity Configurations

24" version is a single door hinges right



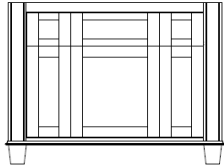
ITEM #	W	D	H	A	Stone Top/Sink
220-0124	24	21.5	34	1995	645
220-0230	30	21.5	34	2195	715
220-0236	36	21.5	34	2295	835



ITEM #	W	D	H	A	Stone Top/Sink
220-0336	36	21.5	34	3395	835
220-0436	36	21.5	34	3395	835

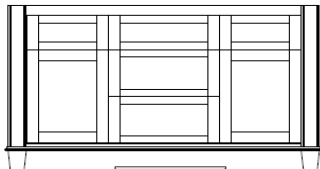
220-0336 has 3 drawers on left

220-0436 has 3 drawers on right



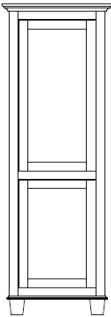
ITEM #	W	D	H	A	Stone Top/Sink
220-0542	42	21.5	34	3295	N/A
220-0548	48	21.5	34	3395	1065
220-0560	60	21.5	34	3495	N/A

Wings have single drawers at the top



ITEM #	W	D	H	A	Stone Top/Sink
220-0760	60	21.5	34	3995	1730
220-0766	66	21.5	34	4095	N/A
220-0772	72	21.5	34	4195	N/A

3 Drawers in the center



Parker Linen Tower

*Measurements are without crown molding

Includes 3 adjustable shelves in upper section

Includes 2 adjustable shelves in lower section

Hinge Left or Hinge Right

Hamper Option - \$250.00

ITEM #	W	D	H	A
220-0924L	*23.25	*15	78	2995
220-0924R	*23.25	*15	78	2995

This design is available with 3 different base options



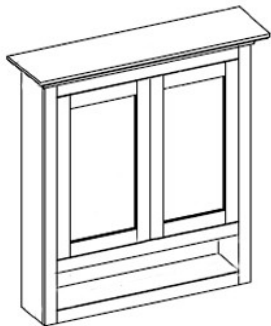
Bracket



Bun



Wedge

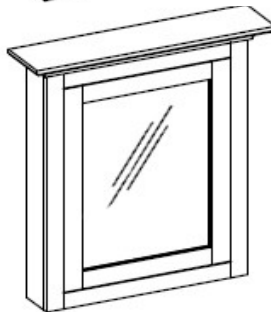


Parker OTJ Cabinet

*Measurements are without crown molding

Includes 2 adjustable wood shelves

ITEM #	W	D	H	A
220-2724	*24	*8.5	32	1295
220-2730	*30	*8.5	32	1395



Signature Medicine Cabinets

*Measurements are without crown molding

Mirrored Back panel in cabinet

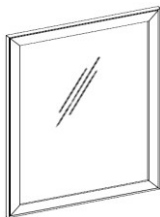
Mirrored Door Front

Includes 3 adjustable glass shelves

Hinge Left or Hinge Right

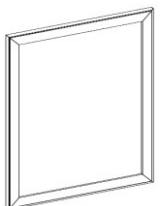
Surface Mount	W	D	H	A
200-2516 L/R	*16	*4.75	32	1195
200-2520 L/R	*20	*4.75	32	1295
200-2524 L/R	*24	*4.75	32	1395

Recessed	W	D	H	A
200-2616 L/R	*16	*4.75	32	1195
200-2620 L/R	*20	*4.75	32	1295
200-2624 L/R	*24	*4.75	32	1395



Face Frame Mirror

ITEM #	W	D	H	A
200-2016	18.5	.75	33.25	525
200-2020	22.5	.75	33.25	535
200-2024	26.5	.75	33.25	545

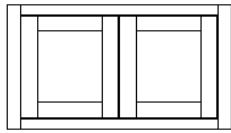


Face Frame Medicine Cabinet Surround

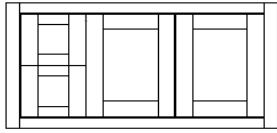
ITEM #	W	D	H	Robern Size	A
200-2116	18.5	.75	33.25	16 x 30	475
200-2120	22.5	.75	33.25	20 x 30	489
200-2124	26.5	.75	33.25	24 x 30	495

130 Wall Hung Vaughan Vanity Configurations

24" version is a single door

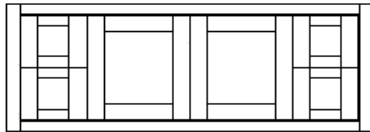


ITEM #	W	D	H	A	Stone Top/Sink
130-0124	24	21.5	18	1795	645
130-0230	30	21.5	18	1895	715
130-0236	36	21.5	18	1995	835

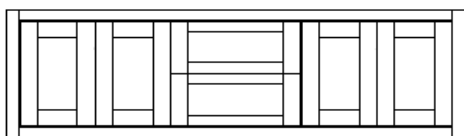


ITEM #	W	D	H	A	Stone Top/Sink
130-0336	36	21.5	18	2595	835
130-0436	36	21.5	18	2595	835

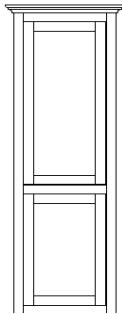
130-0336 has 2 drawers on left
130-0436 has 2 drawers on right



ITEM #	W	D	H	A	Stone Top/Sink
130-0542	42	21.5	18	2995	N/A
130-0548	48	21.5	18	3095	1065
130-0560	60	21.5	18	3195	N/A



ITEM #	W	D	H	A	Stone Top/Sink
130-0760	60	21.5	18	3295	1730
130-0766	66	21.5	18	3395	N/A
130-0772	72	21.5	18	3495	N/A



Vaughan Wall Hung Linen Tower

*Measurements are without crown molding

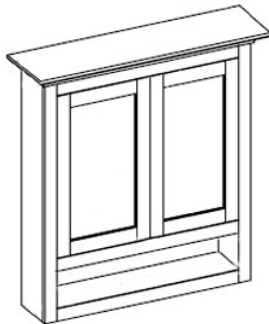
Includes 3 adjustable shelves in upper section

Includes 2 adjustable shelves in lower section

Hinge Left or Hinge Right

Hamper Option - \$250.00

ITEM #	W	D	H	A
130-0924L	*22	*15	72	2945
130-0924R	*22	*15	72	2945

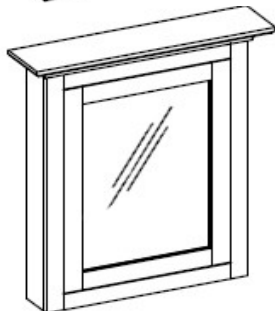


Vaughan OTJ Cabinet

*Measurements are without crown molding

Includes 2 adjustable wood shelves

ITEM #	W	D	H	A
230-2724	*24	*8.5	32	1295
230-2730	*30	*8.5	32	1395



Signature Medicine Cabinets

*Measurements are without crown molding

Mirrored Back panel in cabinet

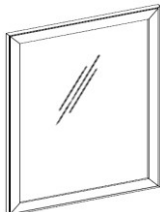
Mirrored Door Front

Includes 3 adjustable glass shelves

Hinge Left or Hinge Right

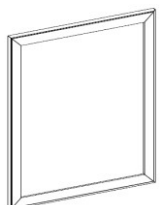
Surface Mount	W	D	H	A
200-2516 L/R	*16	*4.75	32	1195
200-2520 L/R	*20	*4.75	32	1295
200-2524 L/R	*24	*4.75	32	1395

Recessed	W	D	H	A
200-2616 L/R	*16	*4.75	32	1195
200-2620 L/R	*20	*4.75	32	1295
200-2624 L/R	*24	*4.75	32	1395



Face Frame Mirror

ITEM #	W	D	H	A
200-2016	18.5	.75	33.25	525
200-2020	22.5	.75	33.25	535
200-2024	26.5	.75	33.25	545

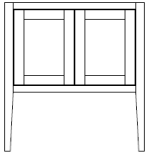


Face Frame Medicine Cabinet Surround

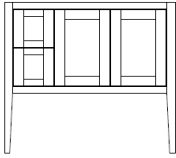
ITEM #	W	D	H	Robern Size	A
200-2116	18.5	.75	33.25	16 x 30	475
200-2120	22.5	.75	33.25	20 x 30	489
200-2124	26.5	.75	33.25	24 x 30	495

230 Vaughan Vanity Configurations

24" version is a single door hinges right

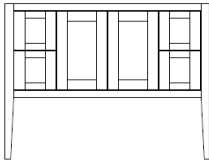


ITEM #	W	D	H	A	Stone Top/Sink
230-0124	24	21.5	34	1795	645
230-0230	30	21.5	34	1895	715
230-0236	36	21.5	34	1995	835

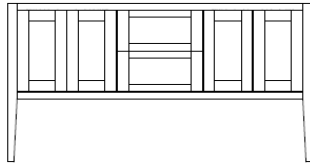


ITEM #	W	D	H	A	Stone Top/Sink
230-0336	36	21.5	34	2595	835
230-0436	36	21.5	34	2595	835

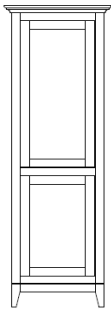
230-0336 has 2 drawers on left
230-0436 has 2 drawers on right



ITEM #	W	D	H	A	Stone Top/Sink
230-0542	42	21.5	34	2995	N/A
230-0548	48	21.5	34	3095	1065
230-0560	60	21.5	34	3195	N/A



ITEM #	W	D	H	A	Stone Top/Sink
230-0760	60	21.5	34	3295	1730
230-0766	66	21.5	34	3395	N/A
230-0772	72	21.5	34	3495	N/A

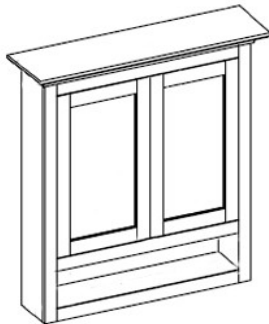


Vaughan Linen Tower

*Measurements are without crown molding
Includes 3 adjustable shelves in upper section
Includes 2 adjustable shelves in lower section

Hinge Left or Hinge Right
Hamper Option - \$250.00

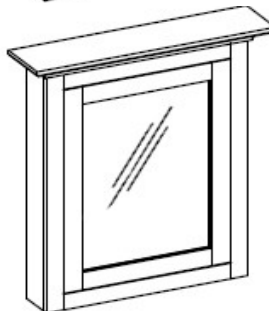
ITEM #	W	D	H	A
230-0924L	*22	*15	78	2995
230-0924R	*22	*15	78	2995



Vaughan OTJ Cabinet

*Measurements are without crown molding
Includes 2 adjustable wood shelves

ITEM #	W	D	H	A
230-2724	*24	*8.5	32	1295
230-2730	*30	*8.5	32	1395



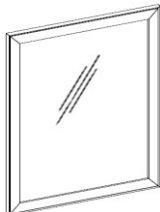
Signature Medicine Cabinets

*Measurements are without crown molding
Mirrored Back panel in cabinet
Mirrored Door Front

Includes 3 adjustable glass shelves
Hinge Left or Hinge Right

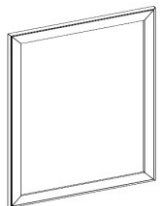
Surface Mount	W	D	H	A
200-2516 L/R	*16	*4.75	32	1195
200-2520 L/R	*20	*4.75	32	1295
200-2524 L/R	*24	*4.75	32	1395

Recessed	W	D	H	A
200-2616 L/R	*16	*4.75	32	1195
200-2620 L/R	*20	*4.75	32	1295
200-2624 L/R	*24	*4.75	32	1395



Face Frame Mirror

ITEM #	W	D	H	A
200-2016	18.5	.75	33.25	525
200-2020	22.5	.75	33.25	535
200-2024	26.5	.75	33.25	545

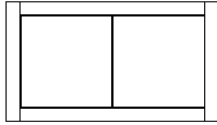


Face Frame Medicine Cabinet Surround

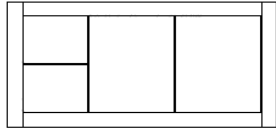
ITEM #	W	D	H	Robern Size	A
200-2116	18.5	.75	33.25	16 x 30	475
200-2120	22.5	.75	33.25	20 x 30	489
200-2124	26.5	.75	33.25	24 x 30	495

140 Wall Hung River Vanity Configurations

24" version is a single door hinges right



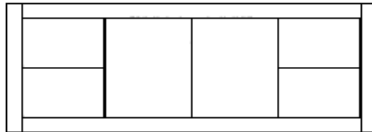
ITEM #	W	D	H	A	Stone Top/Sink
140-0124	24	21.5	18	1745	645
140-0230	30	21.5	18	1845	715
140-0236	36	21.5	18	1945	835



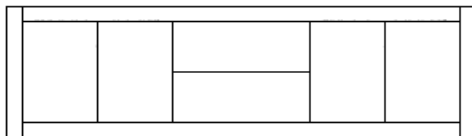
ITEM #	W	D	H	A	Stone Top/Sink
140-0336	36	21.5	18	2545	835
140-0436	36	21.5	18	2545	835

140-0336 has 2 drawers on left

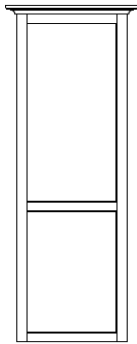
140-0436 has 2 drawers on right



ITEM #	W	D	H	A	Stone Top/Sink
140-0542	42	21.5	18	2945	N/A
140-0548	48	21.5	18	3145	1065
140-0560	60	21.5	18	3245	N/A



ITEM #	W	D	H	A	Stone Top/Sink
140-0760	60	21.5	18	3345	1730
140-0766	66	21.5	18	3445	N/A
140-0772	72	21.5	18	3545	N/A



River Wall Hung Linen Tower

*Measurements are without crown molding

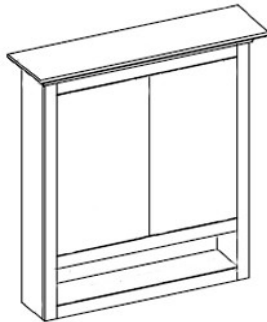
Includes 3 adjustable shelves in upper section

Includes 2 adjustable shelves in lower section

Hinge Left or Hinge Right

Hamper Option - \$250.00

ITEM #	W	D	H	A
140-0924L	*22	*15	72	2945
140-0924R	*22	*15	72	2945

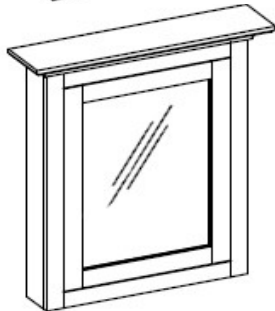


River OTJ Cabinet

*Measurements are without crown molding

Includes 2 adjustable wood shelves

ITEM #	W	D	H	A
240-2724	*24	*8.5	32	1295
240-2730	*30	*8.5	32	1395



Signature Medicine Cabinets

*Measurements are without crown molding

Mirrored Back panel in cabinet

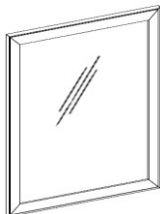
Mirrored Door Front

Includes 3 adjustable glass shelves

Hinge Left or Hinge Right

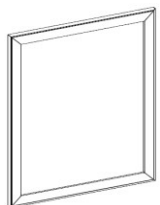
Surface Mount	W	D	H	A
200-2516 L/R	*16	*4.75	32	1195
200-2520 L/R	*20	*4.75	32	1295
200-2524 L/R	*24	*4.75	32	1395

Recessed	W	D	H	A
200-2616 L/R	*16	*4.75	32	1195
200-2620 L/R	*20	*4.75	32	1295
200-2624 L/R	*24	*4.75	32	1395



Face Frame Mirror

ITEM #	W	D	H	A
200-2016	18.5	.75	33.25	525
200-2020	22.5	.75	33.25	535
200-2024	26.5	.75	33.25	545



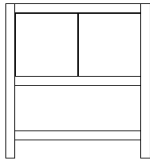
Face Frame Medicine Cabinet Surround

ITEM #	W	D	H	Roborn Size	A
200-2116	18.5	.75	33.25	16 x 30	475
200-2120	22.5	.75	33.25	20 x 30	489
200-2124	26.5	.75	33.25	24 x 30	495

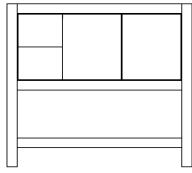
240 River Vanity Configurations

24" version is a single door hinges right

ITEM #	W	D	H	A	Stone Top/Sink
240-0124	24	21.5	34	1795	645
240-0230	30	21.5	34	1895	715
240-0236	36	21.5	34	1995	835

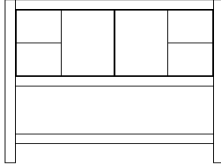


ITEM #	W	D	H	A	Stone Top/Sink
240-0336	36	21.5	34	2595	835
240-0436	36	21.5	34	2595	835

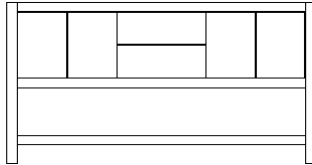


240-0336 has 2 drawers on left
240-0436 has 2 drawers on right

ITEM #	W	D	H	A	Stone Top/Sink
240-0542	42	21.5	34	2995	N/A
240-0548	48	21.5	34	3195	1065
240-0560	60	21.5	34	3295	N/A



ITEM #	W	D	H	A	Stone Top/Sink
240-0760	60	21.5	34	3395	1730
240-0766	66	21.5	34	3495	N/A
240-0772	72	21.5	34	3595	N/A

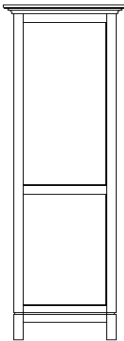


River Linen Tower

*Measurements are without crown molding
Includes 3 adjustable shelves in upper section
Includes 2 adjustable shelves in lower section

Hinge Left or Hinge Right
Hamper Option - \$250.00

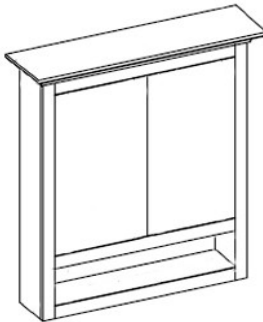
ITEM #	W	D	H	A
240-0924L	*22	*15	78	2995
240-0924R	*22	*15	78	2995



River OTJ Cabinet

*Measurements are without crown molding
Includes 2 adjustable wood shelves

ITEM #	W	D	H	A
240-2724	*24	*8.5	32	1295
240-2730	*30	*8.5	32	1395

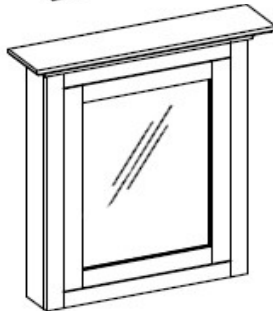


Signature Medicine Cabinets

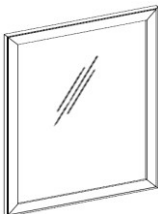
*Measurements are without crown molding
Mirrored Back panel in cabinet
Mirrored Door Front

Includes 3 adjustable glass shelves
Hinge Left or Hinge Right

Surface Mount	W	D	H	A
200-2516 L/R	*16	*4.75	32	1195
200-2520 L/R	*20	*4.75	32	1295
200-2524 L/R	*24	*4.75	32	1395

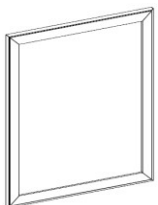


Recessed	W	D	H	A
200-2616 L/R	*16	*4.75	32	1195
200-2620 L/R	*20	*4.75	32	1295
200-2624 L/R	*24	*4.75	32	1395



Face Frame Mirror

ITEM #	W	D	H	A
200-2016	18.5	.75	33.25	525
200-2020	22.5	.75	33.25	535
200-2024	26.5	.75	33.25	545

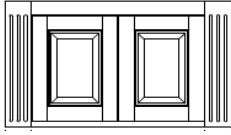


Face Frame Medicine Cabinet Surround

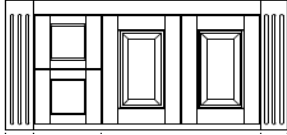
ITEM #	W	D	H	Roborn Size	A
200-2116	18.5	.75	33.25	16 x 30	475
200-2120	22.5	.75	33.25	20 x 30	489
200-2124	26.5	.75	33.25	24 x 30	495

150 Wall Hung Taylor Vanity Configurations

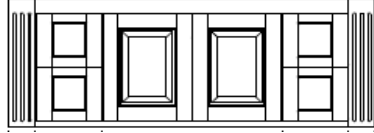
24" version is a single door hinges right



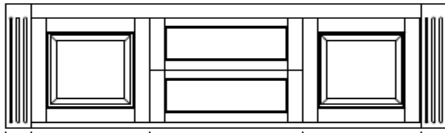
ITEM #	W	D	H	A	Stone Top/Sink
150-0124	24	21.5	18	2145	645
150-0230	30	21.5	18	2245	715
150-0236	36	21.5	18	2345	835



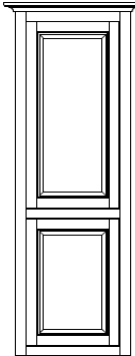
ITEM #	W	D	H	A	Stone Top/Sink
150-0336	36	21.5	18	3445	835
150-0436	36	21.5	18	3445	835



ITEM #	W	D	H	A	Stone Top/Sink
150-0542	42	21.5	18	3845	N/A
150-0548	48	21.5	18	3945	1065
150-0560	60	21.5	18	4145	N/A



ITEM #	W	D	H	A	Stone Top/Sink
150-0760	60	21.5	18	4045	1730
150-0766	66	21.5	18	4145	N/A
150-0772	72	21.5	18	4245	N/A



Taylor Wall Hung Linen Tower

*Measurements are without crown molding

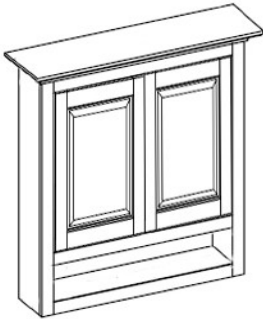
Includes 3 adjustable shelves in upper section

Includes 2 adjustable shelves in lower section

Hinge Left or Hinge Right

Hamper Option - \$250.00

ITEM #	W	D	H	A
150-0924L	*23.5	*15	72	2945
150-0924R	*23.5	*15	72	2945

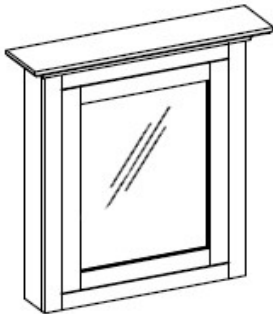


Taylor OTJ Cabinet

*Measurements are without crown molding

Includes 2 adjustable wood shelves

ITEM #	W	D	H	A
250-2724	*24	*8.5	32	1295
250-2730	*30	*8.5	32	1395



Signature Medicine Cabinets

*Measurements are without crown molding

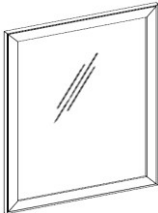
Mirrored Back panel in cabinet

Mirrored Door Front

Includes 3 adjustable glass shelves

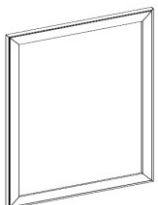
Hinge Left or Hinge Right

Surface Mount	W	D	H	A
200-2516 L/R	*16	*4.75	32	1195
200-2520 L/R	*20	*4.75	32	1295
200-2524 L/R	*24	*4.75	32	1395
Recessed	W	D	H	A
200-2616 L/R	*16	*4.75	32	1195
200-2620 L/R	*20	*4.75	32	1295
200-2624 L/R	*24	*4.75	32	1395



Face Frame Mirror

ITEM #	W	D	H	A
200-2016	18.5	.75	33.25	525
200-2020	22.5	.75	33.25	535
200-2024	26.5	.75	33.25	545

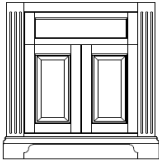


Face Frame Medicine Cabinet Surround

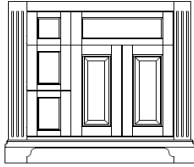
ITEM #	W	D	H	Roborn Size	A
200-2116	18.5	.75	33.25	16 x 30	475
200-2120	22.5	.75	33.25	20 x 30	489
200-2124	26.5	.75	33.25	24 x 30	495

250 Taylor Vanity Configurations

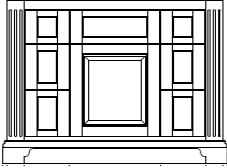
24" version is a single door hinges right



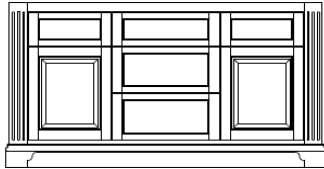
ITEM #	W	D	H	A	Stone Top/Sink
250-0124	24	21.5	34	2195	645
250-0230	30	21.5	34	2295	715
250-0236	36	21.5	34	2395	835



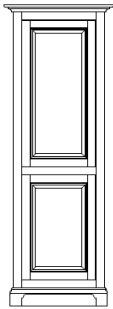
ITEM #	W	D	H	A	Stone Top/Sink
250-0336	36	21.5	34	3495	835
250-0436	36	21.5	34	3495	835



ITEM #	W	D	H	A	Stone Top/Sink
250-0542	42	21.5	34	3895	N/A
250-0548	48	21.5	34	3995	1065
250-0560	60	21.5	34	4195	N/A



ITEM #	W	D	H	A	Stone Top/Sink
250-0760	60	21.5	34	4095	1730
250-0766	66	21.5	34	4195	N/A
250-0772	72	21.5	34	4295	N/A



Taylor Linen Tower

*Measurements are without crown molding

Includes 3 adjustable shelves in upper section

Includes 2 adjustable shelves in lower section

Hinge Left or Hinge Right

Hamper Option - \$250.00

ITEM #	W	D	H	A
250-0924L	*23.5	*15	78	2995
250-0924R	*23.5	*15	78	2995

This design is available with 3 different base options



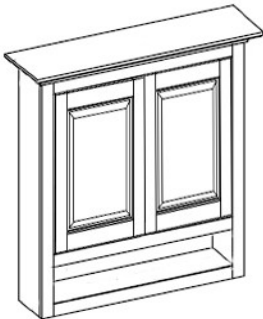
Bracket



Bun



Wedge

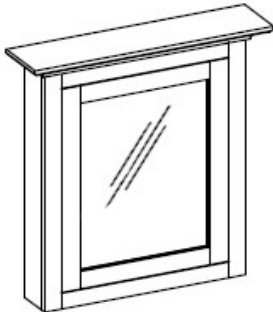


Taylor OTJ Cabinet

*Measurements are without crown molding

Includes 2 adjustable wood shelves

ITEM #	W	D	H	A
250-2724	*24	*8.5	32	1295
250-2730	*30	*8.5	32	1395



Signature Medicine Cabinets

*Measurements are without crown molding

Mirrored Back panel in cabinet

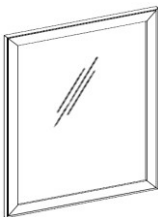
Mirrored Door Front

Includes 3 adjustable glass shelves

Hinge Left or Hinge Right

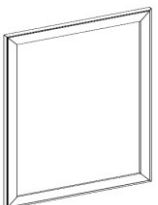
Surface Mount	W	D	H	A
200-2516 L/R	*16	*4.75	32	1195
200-2520 L/R	*20	*4.75	32	1295
200-2524 L/R	*24	*4.75	32	1395

Recessed	W	D	H	A
200-2616 L/R	*16	*4.75	32	1195
200-2620 L/R	*20	*4.75	32	1295
200-2624 L/R	*24	*4.75	32	1395



Face Frame Mirror

ITEM #	W	D	H	A
200-2016	18.5	.75	33.25	525
200-2020	22.5	.75	33.25	535
200-2024	26.5	.75	33.25	545



Face Frame Medicine Cabinet Surround

ITEM #	W	D	H	Roborn Size	A
200-2116	18.5	.75	33.25	16 x 30	475
200-2120	22.5	.75	33.25	20 x 30	489
200-2124	26.5	.75	33.25	24 x 30	495

Wall Hung version see Vaughan

260 Nolan Vanity Configurations

24" version is a single door hinges right

ITEM #	W	D	H	A	Stone Top/Sink
260-0124	24	21.5	34	1795	645
260-0230	30	21.5	34	1995	715
260-0236	36	21.5	34	2095	835

ITEM #	W	D	H	A	Stone Top/Sink
260-0336	36	21.5	34	2895	835
260-0436	36	21.5	34	2895	835

260-0336 has 3 drawers on left
260-0436 has 3 drawers on right

ITEM #	W	D	H	A	Stone Top/Sink
260-0542	42	21.5	34	3395	N/A
260-0548	48	21.5	34	3495	1065
260-0560	60	21.5	34	3595	N/A

ITEM #	W	D	H	A	Stone Top/Sink
260-0760	60	21.5	34	3695	1730
260-0766	66	21.5	34	3795	N/A
260-0772	72	21.5	34	3895	N/A

Nolan Linen Tower

*Measurements are without crown molding
Includes 3 adjustable shelves in upper section
Includes 2 adjustable shelves in lower section

Hinge Left or Hinge Right
Hamper Option - \$250.00

ITEM #	W	D	H	A
260-0924L	*22	*15	78	2995
260-0924R	*22	*15	78	2995

Nolan OTJ Cabinet

*Measurements are without crown molding
Includes 2 adjustable wood shelves

ITEM #	W	D	H	A
260-2724	*24	*8.5	32	1295
260-2730	*30	*8.5	32	1395

Signature Medicine Cabinets

*Measurements are without crown molding
Mirrored Back panel in cabinet
Mirrored Door Front

Includes 3 adjustable glass shelves
Hinge Left or Hinge Right

Surface Mount	W	D	H	A
200-2516 L/R	*16	*4.75	32	1195
200-2520 L/R	*20	*4.75	32	1295
200-2524 L/R	*24	*4.75	32	1395

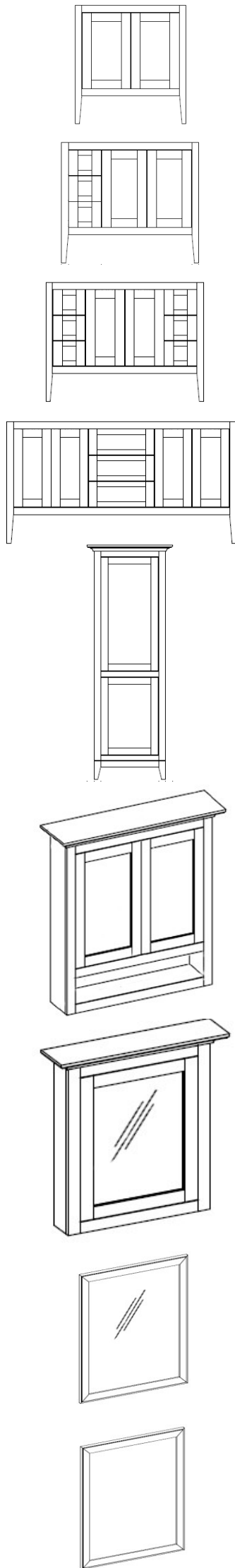
Recessed	W	D	H	A
200-2616 L/R	*16	*4.75	32	1195
200-2620 L/R	*20	*4.75	32	1295
200-2624 L/R	*24	*4.75	32	1395

Face Frame Mirror

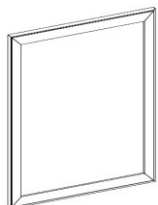
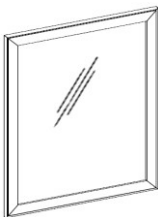
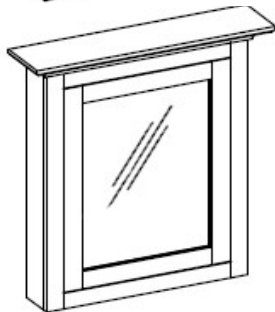
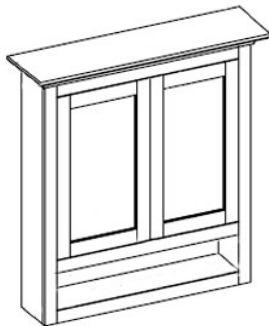
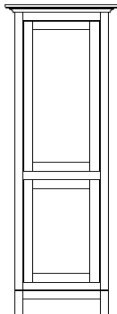
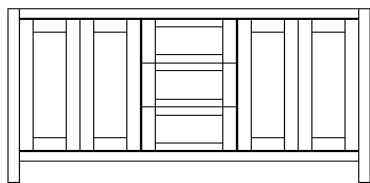
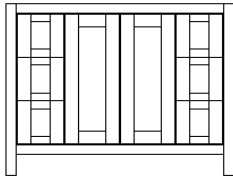
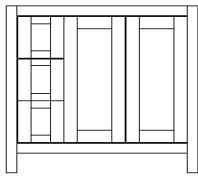
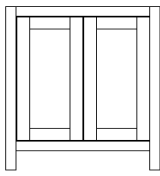
ITEM #	W	D	H	A
200-2016	18.5	.75	33.25	525
200-2020	22.5	.75	33.25	535
200-2024	26.5	.75	33.25	545

Face Frame Medicine Cabinet Surround

ITEM #	W	D	H	Robern Size	A
200-2116	18.5	.75	33.25	16 x 30	475
200-2120	22.5	.75	33.25	20 x 30	489
200-2124	26.5	.75	33.25	24 x 30	495



Wall Hung version see Vaughan



270 Ethan Vanity Configurations

24" version is a single door hinges right

ITEM #	W	D	H	A	Stone Top/Sink
270-0124	24	21.5	34	1795	645
270-0230	30	21.5	34	1995	715
270-0236	36	21.5	34	2095	835

ITEM #	W	D	H	A	Stone Top/Sink
270-0336	36	21.5	34	2895	835
270-0436	36	21.5	34	2895	835

270-0336 has 3 drawers on left

270-0436 has 3 drawers on right

ITEM #	W	D	H	A	Stone Top/Sink
270-0542	42	21.5	34	3395	N/A
270-0548	48	21.5	34	3495	1065
270-0560	60	21.5	34	3595	N/A

ITEM #	W	D	H	A	Stone Top/Sink
270-0760	60	21.5	34	3695	1730
270-0766	66	21.5	34	3795	N/A
270-0772	72	21.5	34	3895	N/A

Ethan Linen Tower

*Measurements are without crown molding

Includes 3 adjustable shelves in upper section

Includes 2 adjustable shelves in lower section

Hinge Left or Hinge Right

Hamper Option - \$250.00

ITEM #	W	D	H	A
270-0924L	*26.5	*15	78	2995
270-0924R	*26.5	*15	78	2995

Ethan OTJ Cabinet

*Measurements are without crown molding

Includes 2 adjustable wood shelves

ITEM #	W	D	H	A
260-2724	*24	*8.5	32	1295
260-2730	*30	*8.5	32	1395

Signature Medicine Cabinets

*Measurements are without crown molding

Mirrored Back panel in cabinet

Mirrored Door Front

Includes 3 adjustable glass shelves

Hinge Left or Hinge Right

Surface Mount	W	D	H	A
200-2516 L/R	*16	*4.75	32	1195
200-2520 L/R	*20	*4.75	32	1295
200-2524 L/R	*24	*4.75	32	1395

Recessed	W	D	H	A
200-2616 L/R	*16	*4.75	32	1195
200-2620 L/R	*20	*4.75	32	1295
200-2624 L/R	*24	*4.75	32	1395

Face Frame Mirror

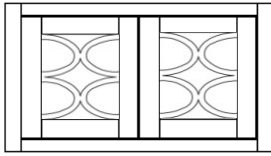
ITEM #	W	D	H	A
200-2016	18.5	.75	33.25	525
200-2020	22.5	.75	33.25	535
200-2024	26.5	.75	33.25	545

Face Frame Medicine Cabinet Surround

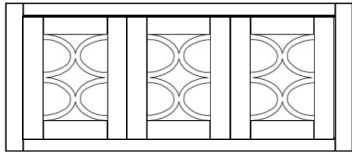
ITEM #	W	D	H	Roborn Size	A
200-2116	18.5	.75	33.25	16 x 30	475
200-2120	22.5	.75	33.25	20 x 30	489
200-2124	26.5	.75	33.25	24 x 30	495

180 Wall Hung Stephen Vanity Configurations

20" and 24" versions are single door hinges right



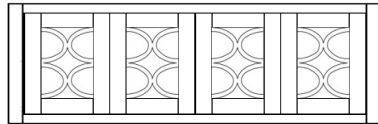
ITEM #	W	D	H	A	Stone Top/Sink
180-0120	20	21.5	34	1945	N/A
180-0124	24	21.5	34	1945	645
180-0230	30	21.5	34	2045	715
180-0236	36	21.5	34	2145	835



ITEM #	W	D	H	A	Stone Top/Sink
180-0336	36	21.5	34	3145	835
180-0436	42	21.5	34	3145	835

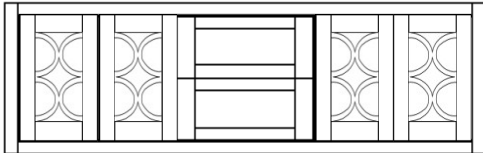
180-0336 has pullout on left

180-0436 has pullout on right



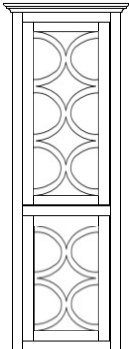
ITEM #	W	D	H	A	Stone Top/Sink
180-0542	42	21.5	34	3645	N/A
180-0548	48	21.5	34	3745	1065
180-0560	60	21.5	34	3845	N/A

Pullouts on both sides



ITEM #	W	D	H	A	Stone Top/Sink
180-0760	60	21.5	34	3945	1730
180-0766	66	21.5	34	4045	N/A
180-0772	72	21.5	34	4145	N/A

2 Drawers in the center



Stephen Wall Hung Linen Tower

*Measurements are without crown molding

Includes 3 adjustable shelves in upper section

Includes 2 adjustable shelves in lower section

Hinge Left or Hinge Right

Hamper Option - \$250.00

ITEM #	W	D	H	A
180-0924L	*22	*15	78	3345
180-0924R	*22	*15	78	3345

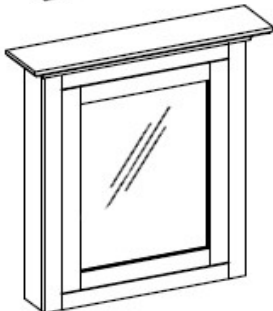


Stephen OTJ Cabinet

*Measurements are without crown molding

Includes 2 adjustable wood shelves

ITEM #	W	D	H	A
280-2724	*24	*8.5	32	1495
280-2730	*30	*8.5	32	1595



Signature Medicine Cabinets

*Measurements are without crown molding

Mirrored Back panel in cabinet

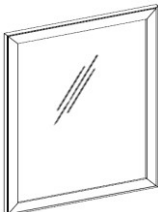
Mirrored Door Front

Includes 3 adjustable glass shelves

Hinge Left or Hinge Right

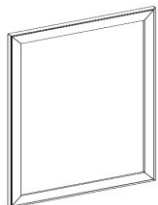
Surface Mount	W	D	H	A
200-2516 L/R	*16	*4.75	32	1195
200-2520 L/R	*20	*4.75	32	1295
200-2524 L/R	*24	*4.75	32	1395

Recessed	W	D	H	A
200-2616 L/R	*16	*4.75	32	1195
200-2620 L/R	*20	*4.75	32	1295
200-2624 L/R	*24	*4.75	32	1395



Face Frame Mirror

ITEM #	W	D	H	A
200-2016	18.5	.75	33.25	525
200-2020	22.5	.75	33.25	535
200-2024	26.5	.75	33.25	545



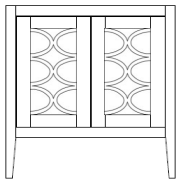
Face Frame Medicine Cabinet Surround

ITEM #	W	D	H	Robern Size	A
200-2116	18.5	.75	33.25	16 x 30	475
200-2120	22.5	.75	33.25	20 x 30	489
200-2124	26.5	.75	33.25	24 x 30	495

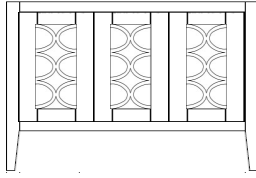
280 Stephen Vanity Configurations

20" and 24" versions are single door hinges right

ITEM #	W	D	H	A	Stone Top/Sink
280-0120	20	21.5	34	1995	N/A
280-0124	24	21.5	34	1995	645
280-0230	30	21.5	34	2095	715
280-0236	36	21.5	34	2195	835

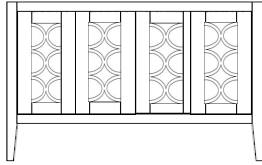


ITEM #	W	D	H	A	Stone Top/Sink
280-0336	36	21.5	34	3195	835
280-0436	36	21.5	34	3195	835



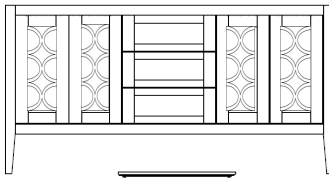
280-0336 has pullout on left
280-0436 has pullout on right

ITEM #	W	D	H	A	Stone Top/Sink
280-0542	42	21.5	34	3695	N/A
280-0548	48	21.5	34	3795	1065
280-0560	60	21.5	34	3895	N/A



Pullouts on both sides

ITEM #	W	D	H	A	Stone Top/Sink
280-0760	60	21.5	34	3995	1730
280-0766	66	21.5	34	4095	N/A
280-0772	72	21.5	34	4195	N/A



3 drawers in the middle

Stephen Linen Tower

*Measurements are without crown molding

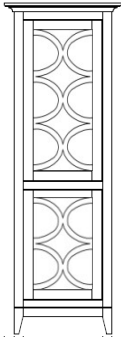
Includes 3 adjustable shelves in upper section

Includes 2 adjustable shelves in lower section

Hinge Left or Hinge Right

Hamper Option - \$250.00

ITEM #	W	D	H	A
280-0924L	*22	*15	78	3395
280-0924R	*22	*15	78	3395

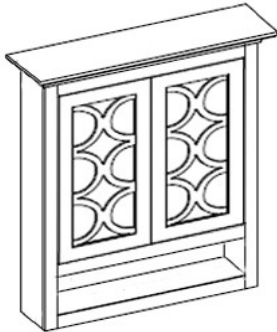


Stephen OTJ Cabinet

*Measurements are without crown molding

Includes 2 adjustable wood shelves

ITEM #	W	D	H	A
280-2724	*24	*8.5	32	1495
280-2730	*30	*8.5	32	1595



Signature Medicine Cabinets

*Measurements are without crown molding

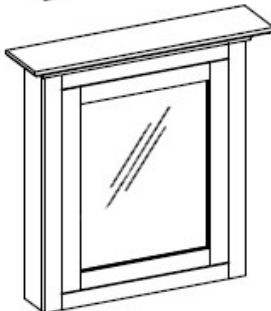
Mirrored Back panel in cabinet

Mirrored Door Front

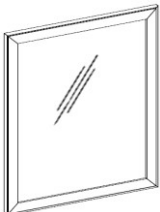
Includes 3 adjustable glass shelves

Hinge Left or Hinge Right

Surface Mount	W	D	H	A
200-2516 L/R	*16	*4.75	32	1195
200-2520 L/R	*20	*4.75	32	1295
200-2524 L/R	*24	*4.75	32	1395

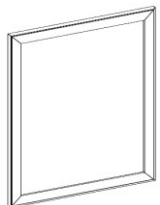


Recessed	W	D	H	A
200-2616 L/R	*16	*4.75	32	1195
200-2620 L/R	*20	*4.75	32	1295
200-2624 L/R	*24	*4.75	32	1395



Face Frame Mirror

ITEM #	W	D	H	A
200-2016	18.5	.75	33.25	525
200-2020	22.5	.75	33.25	535
200-2024	26.5	.75	33.25	545



Face Frame Medicine Cabinet Surround

ITEM #	W	D	H	Robern Size	A
200-2116	18.5	.75	33.25	16 x 30	475
200-2120	22.5	.75	33.25	20 x 30	489
200-2124	26.5	.75	33.25	24 x 30	495

FACTORY POLICIES AND CONDITIONS OF SALE

Product Information: Furniture Guild product is crafted by hand. Slight variations in dimensions and finish are expected. Minor touch-up or "deluxing" is the responsibility of the dealer.

Terms: Orders are subject to acceptance by the Furniture Guild. Returned merchandise will not be accepted unless the return is authorized by The Furniture Guild and the merchandise is properly packaged. All new accounts are required to remit a 50% deposit upon opening order. After which, the balance will be on advance cartoned to prevent further damage in transit. We will not issue pending credit application. Customers requiring a CO credit for local repairs performed without prior factory approval. Shipment will be notified 10 days prior to shipping. Prices are subject to change without notice. Clerical errors are subject to correction. The contract of sale is our printed acknowledgement. Payment terms are net 30 days with approved credit. Refer to factory for account discount schedule.

ABSOLUTELY **NO** refunds are honored. Deposits will be forfeited on orders that have been cancelled after they have been processed. ANY CREDITS received will be applied toward the account's next invoice. If your account has been placed on proforma (CBD) terms, and the balance of the invoice is not received within (30) days of the date on the invoice, the order will be cancelled and the deposit will be forfeited. You will also receive an additional invoice for the re-stocking fee.

Shipping Information: Lead times can vary, please call. Lead times are estimated from the receipt of the deposit, **NOT** from the exact date given on the acknowledgement. All shipments are FOB Factory, Canton, Georgia. When the carrier is not specified on the order, it is assumed that selection of carrier is left to our judgement. We can ship to private residences for an additional charge. We will hold GOODS FOR PICK UP for TWO weeks after notifying our customer. After that time we will cancel or ship at our discretion. Payment for CBD ORDERS will be requested about 10 days before goods become available. To assure availability, payment must be received no later than two weeks after the date of the request. We are not responsible for goods missed because of late CBD payments. We will make every effort to ship goods as scheduled on acknowledgements. We will not be held responsible for late shipment due to material shortages, transportation delay, or other conditions beyond our control.

Damaged or Defective Goods: Any damage or shortage should be noted on the Freight Bill of Lading, BEFORE signing. If concealed damage is discovered after the delivery, it is the purchaser's responsibility to retain all packing material including the carton and to notify the carrier immediately to schedule an inspection. If an item is factory defective, report your findings to the factory. Please advise us of item #, invoice #, nature of the defect, and, if possible, an estimate for local repair. We reserve the right to decide if defective goods are to be exchanged, repaired at the factory and returned, or repaired locally and credit issued. The Furniture Guild will not accept any responsibility for open joints due to movements or climate variance on finished product.

Claims against us will be considered only if filed in writing within (5) days of delivery. Failure to make such claim shall constitute acceptance of the merchandise and waiver of any defects, errors or shortages. We will not be held liable for consequential damages.

Please return pieces within a 30-day period from the time the problem is reported. A return Authorization will be issued to facilitate the return. A 25% restocking fee will be assessed on all orders not deemed defective by The Furniture Guild.

If your orders are shipped to a "receiver/shipper", please be aware that we will not be responsible for expenses incurred for delivery to and from your customer in the event the piece needs to be returned and you did not inspect it first.

Cancellations: We cannot accept cancellations once order has been placed into production.

Dimensions: Dimensions given are approximate and can vary due to handcrafting by individual craftsman.

Custom Size: We are always willing to alter any piece in our line or build a piece to your customer's specifications. Please call the factory for a quote. We require full payment prior to start of production for these items.

Care and Maintenance: Very little general maintenance is required. All finishes and paints are protected with lacquer and will maintain its look under most conditions. Pieces may be wiped off with a damp cloth. However, a spill allowed to stand overnight may result in damage.

Wood is a living substance and it continues to breathe, no matter how old it is. Dry air is the worst enemy of furniture, so try to keep rooms at an even temperature with good humidity. Do not use any silicone-based polish / cleaner on your furniture. The chemicals and solvents in these products can cause the lacquer to soften and lift. Do not be afraid to use your furniture. The everyday scratches and scuffs add to the beauty and character of your antique reproduction.

THE FURNITURE GUILD, INC.
P.O. BOX 1647 - Zip: 30169
141 RAILROAD STREET
CANTON, GEORGIA 30114
(770)479-4108
Fax: (770)479-0176



The Furniture Guild
P.O Box 1647, Canton, GA 30169
141 Railroad Street, Suite 105, Canton, GA 30114

www.thefurnitureguild.com
phone 888.479.4108 - fax 770.479.0176